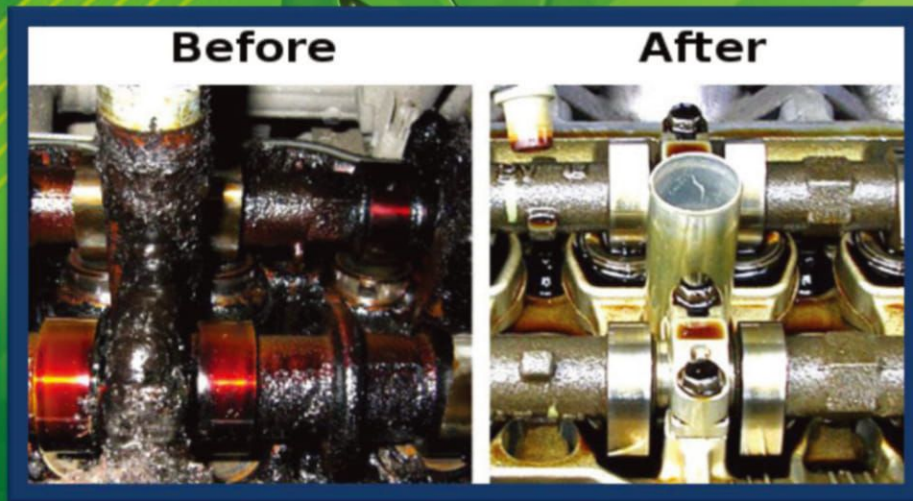




ENGINE FLUSH

GC Maxpro Engine Flush – Manufactured in the Indonesia, An engine flush is chemical additive designed to clean accumulated deposits, sludge and other gunk from your engine. You pour it into your engine’s oil-filler port and idle the engine for about 10-15 minutes. It mixes with the oil and circulates through the engine, helping dissolve sludge and clean deposits. Then, you drain the oil (along with much of the gunk, in theory), change the oil filter, add fresh oil and return to the business of driving.

It’s quick, safe and a totally green product.



Direction to use :

Shake before use and follow the instruction below :

- Allow the car's engine to run until it reaches normal operating temperature, turn engine off.
- Then pour entire bottle 250ml into oil crankcase (treats 3-5L).
- The engine should run for 5 to 15 minutes at idle to circulate flush. DO NOT DRIVE VEHICLE.
- Drain crankcase and remove the oil filter.
- Replace drain plug and install the new oil filter.
- Refill crankcase with new motor oil.

Caution :

- Remove victim to fresh air and keep at rest in a position comfortable for breathing.
- Flush contaminated skin with plenty of water.
- Immediately flush eyes with plenty of water.
- Wash out mouth with water. Remove dentures if any.
- Keep away from childrens

REBORN YOUR ENGINE

Grup
MAHAWIRA

www.mahawiragrup.co.id

"Authorized Distributor & Stockist"

